

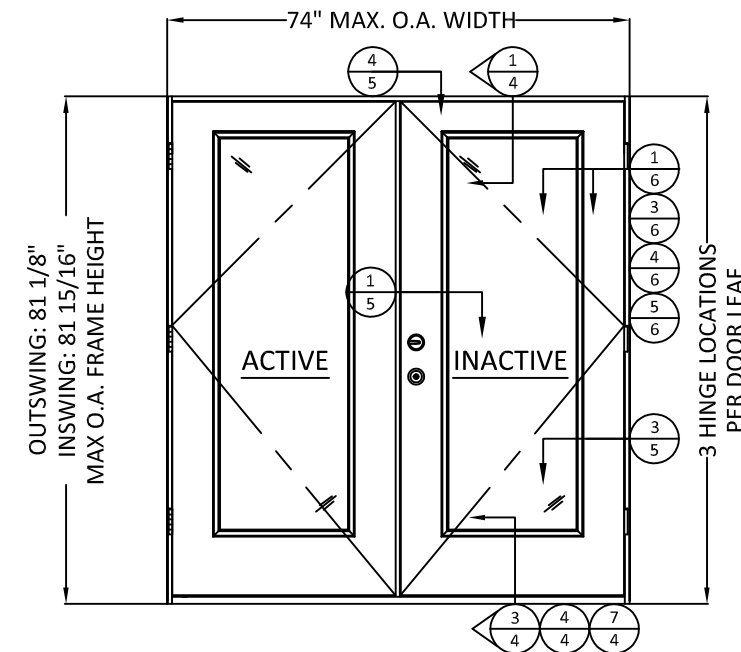
JELD WEN® WINDOWS & DOORS

DESIGN PRO / SMOOTH PRO FULL LITE IMPACT APPROVED

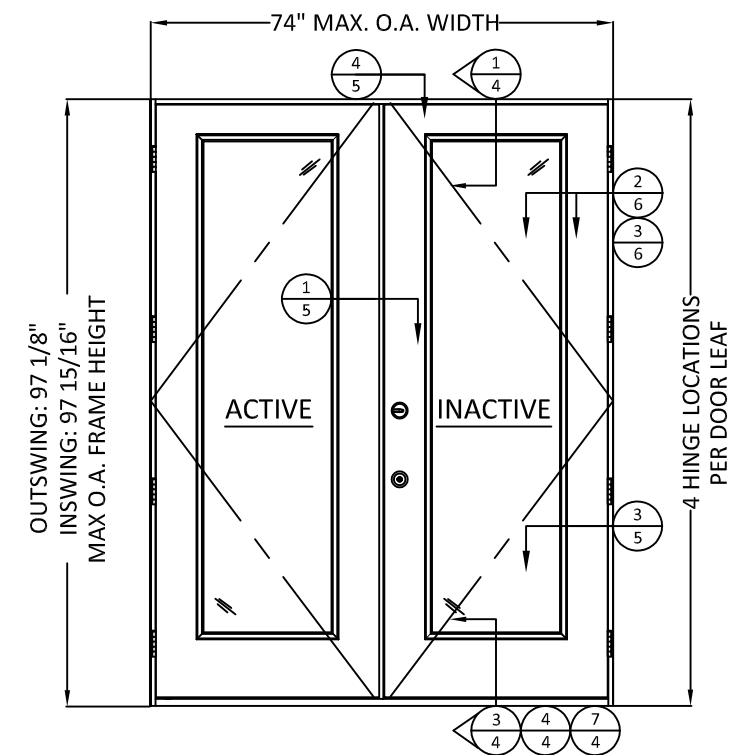
FOR USE IN THE HIGH VELOCITY HURRICANE ZONE (HVHZ)

GENERAL NOTES:

- THE PRODUCT SHOWN HEREIN IS DESIGNED AND MANUFACTURED TO COMPLY WITH THE CURRENT FLORIDA BUILDING CODE (FBC), INCLUDING HVHZ AND HAS BEEN EVALUATED ACCORDING TO THE FOLLOWING:
 - TAS 201-94
 - TAS 202-94
 - TAS 203-94
- ADEQUACY OF THE EXISTING STRUCTURAL CONCRETE/MASONRY OR 2X FRAMING AS A MAIN WIND FORCE RESISTING SYSTEM CAPABLE OF WITHSTANDING AND TRANSFERRING APPLIED PRODUCT LOADS TO THE FOUNDATION IS THE RESPONSIBILITY OF THE ENGINEER OR ARCHITECT OF RECORD FOR THE PROJECT OF INSTALLATION.
- THE INSTALLATION DETAILS DESCRIBED HEREIN ARE GENERIC AND MAY NOT REFLECT ACTUAL CONDITIONS FOR A SPECIFIC SITE. IF SITE CONDITIONS CAUSE INSTALLATION TO DEVIATE FROM THE REQUIREMENTS DETAILED HEREIN, A LICENSED ENGINEER OR ARCHITECT SHALL PREPARE SITE SPECIFIC DOCUMENTS FOR USE WITH THIS DOCUMENT.
- APPROVED IMPACT PROTECTIVE SYSTEM **IS NOT REQUIRED** ON THIS PRODUCT IN AREAS REQUIRING IMPACT RESISTANCE.
- GLASS MEETS THE REQUIREMENTS OF ASTM E 1300 GLASS CHARTS. SEE SHEET 6 FOR GLAZING DETAILS.
- FULL LITE APPROVAL COVERS USE OF FRACTIONAL GLAZING, INCLUDING INTERNAL GRID, BLINDS BETWEEN GLASS, DECORATIVE, EXTERNAL WROUGHT IRON AND RADIUS (SHAPED) LITES.
- NOTE: AFCO H-497 SILL MEETS WATER INFILTRATION AT WATER TEST PRESSURE (WTP) OF 9.0 PSF. REMAINING SILLS NOT RATED FOR WATER INFILTRATION. IF AUTHORITY HAVING JURISDICTION REQUIRES THAT PRODUCT MEETS THIS REQUIREMENT, PRODUCT SHALL BE USED WHEN INSTALLED AT LOCATION PROTECTED BY OVERHANG SUCH THAT OVERHANG (OH) RATIO = OH LENGTH ÷ OH HEIGHT IS ≥ 1.0



1 TYP. ELEVATION 1
6'-8" DOOR HEIGHT



2 TYP. ELEVATION 2
8'-0" DOOR HEIGHT

NOTE:
INACTIVE AND ACTIVE DOOR PANEL
ORIENTATION IS INTERCHANGEABLE.

CONFIGURATION	MAX. OVERALL NOMINAL SIZE		DESIGN PRESSURE (PSF)				MISSILE IMPACT RATING
	WIDTH	HEIGHT	INSWING		OUTSWING		
			POS.	NEG.	POS.	NEG.	
XX	6'-0"	6'-8"	60*	60	60*	60	LMI & SMI
XX RADIUS	6'-0"	6'-8"	60*	60	60*	60	LMI & SMI
XX	6'-0"	8'-0"	50*	50	50*	50	LMI & SMI

*SEE GENERAL NOTE 7, SHEET 1, FOR WATER INFILTRATION APPROVED SILLS.

TABLE OF CONTENTS		
SHEET	REVISION	SHEET DESCRIPTION
1	A	TYPICAL ELEVATIONS, DESIGN PRESSURES, AND GENERAL NOTES
2	A	TYPICAL ANCHOR LAYOUTS AND NOTES
3	-	OPTIONAL 2X BUCK ANCHORING DETAILS
4	-	VERTICAL ASSEMBLIES
5	A	HORIZONTAL ASSEMBLIES
6	A	GLAZING DETAILS
7	-	WOOD SUBSTRATES
8	-	CONCRETE SUBSTRATES
9	A	COMPONENTS & BILL OF MATERIALS

PREPARED BY:



BUILDING DROPS, INC.
398 E. DANIA BEACH BLVD., STE. 338
DANIA BEACH, FL 33004
PH: (954)399-8478
FAX: (954)744-4738
WEB: www.buildingdrops.com

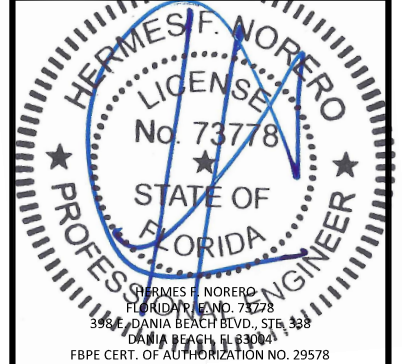
TITLE: DESIGN PRO/SMOOTH PRO FULL LITE
IMPACT APPROVED
TYPICAL ELEVATIONS, DESIGN
PRESSURES, AND GENERAL NOTES

3737 LAKEPORT BLVD.,
KLAMATH FALLS, OR 97601
PH: (541)882-3451
FAX: (541)850-2609



REMARKS	BY	DATE
Add Multi-Point Lock & Radius Lt	GL	06/23/14
Reference DWG. #A010874A	AM	09/10/19

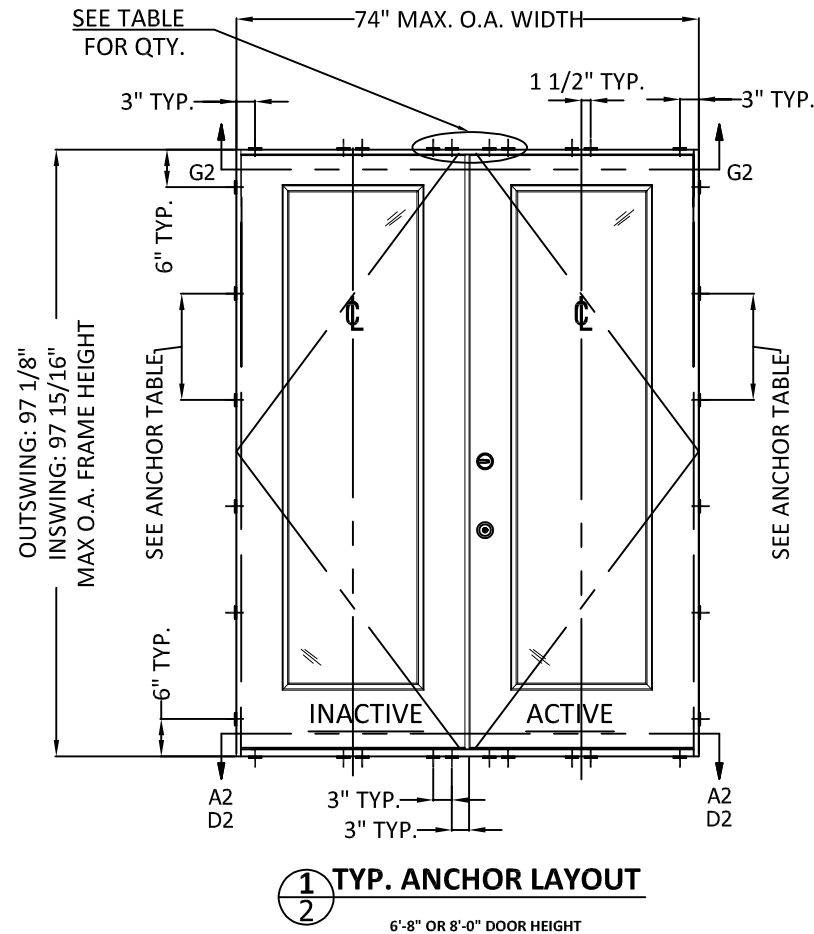
THE INSTALLATION DETAILS DESCRIBED HEREIN ARE GENERIC AND MAY NOT REFLECT ACTUAL CONDITIONS FOR A SPECIFIC SITE. IF SITE CONDITIONS CAUSE INSTALLATION TO DEVIATE FROM THE REQUIREMENTS DETAILED HEREIN, A LICENSED ENGINEER OR ARCHITECT SHALL PREPARE SITE SPECIFIC DOCUMENTS FOR USE WITH THIS DOCUMENT.



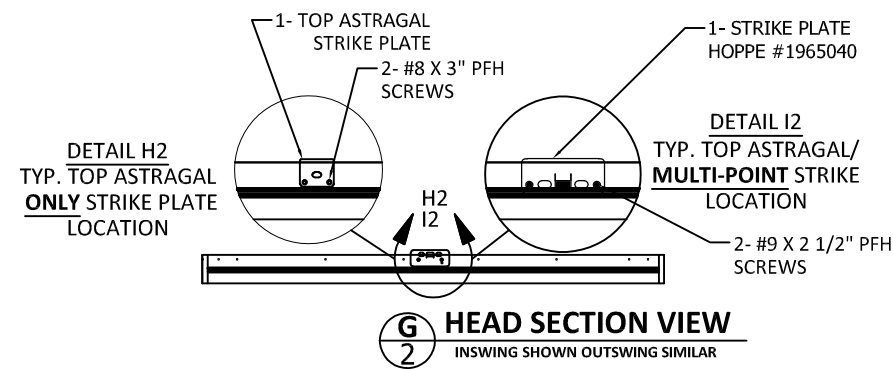
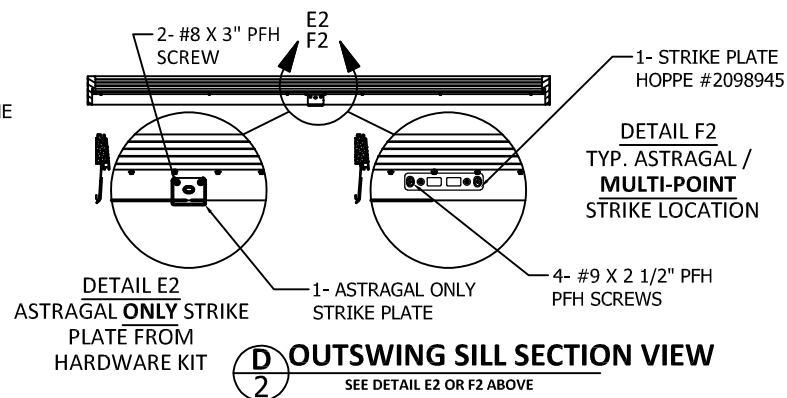
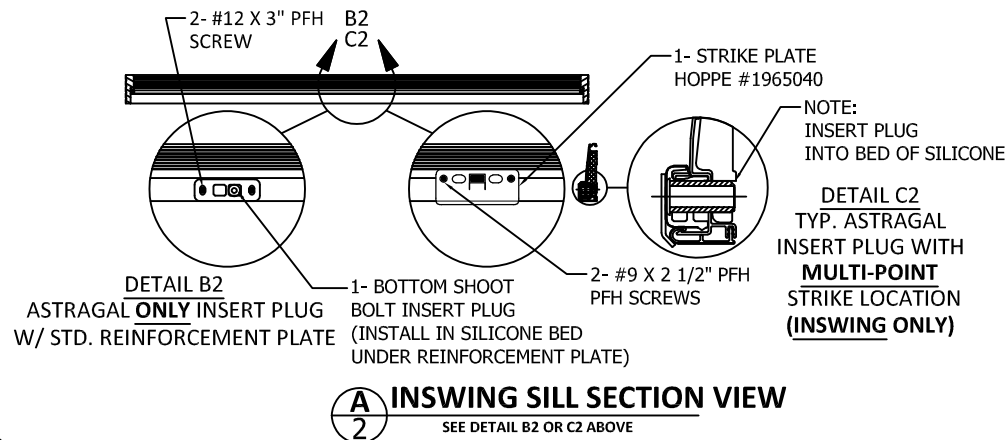
DATE: 02.05.14
DWG. BY: GL/TJM | CHK. BY: SS/MSS
SCALE: NTS
DWG. #: D015705
SHEET: OF 9

INSTALLATION NOTES:

- ONE (1) INSTALLATION ANCHOR IS REQUIRED AT EACH ANCHOR LOCATION SHOWN.
- SHIM AS REQUIRED AT EACH INSTALLATION ANCHOR WITH LOAD BEARING SHIM(S). MAXIMUM ALLOWABLE SHIM STACK TO BE 1/4 INCH. SHIM WHERE SPACE OF 1/16 INCH OR GREATER OCCURS. SHIM(S) SHALL BE CONSTRUCTED OF HIGH DENSITY PLASTIC OR BETTER.
- MINIMUM EMBEDMENT AND EDGE DISTANCE EXCLUDE WALL FINISHES, INCLUDING BUT NOT LIMITED TO STUCCO, FOAM, BRICK VENEER, AND SIDING.
- INSTALLATION ANCHORS AND ASSOCIATED HARDWARE MUST BE MADE OF CORROSION RESISTANT MATERIAL OR HAVE A CORROSION RESISTANT COATING, AND SHALL BE INSTALLED IN ACCORDANCE WITH ANCHOR MANUFACTURER'S INSTALLATION INSTRUCTIONS.
- FOR HOLLOW BLOCK AND GROUT FILLED BLOCK, DO NOT INSTALL INSTALLATION ANCHORS INTO MORTAR JOINTS. EDGE DISTANCE IS MEASURED FROM FREE EDGE OF BLOCK OR EDGE OF MORTAR JOINT INTO FACE SHELL OF BLOCK.
- FOR 2X STUD CONSTRUCTION, ANCHORING OF THESE PRODUCTS SHALL BE THE SAME AS FOR 2X BUCK CONCRETE/MASONRY CONSTRUCTION.
- INSTALLATION ANCHOR CAPACITIES FOR PRODUCTS HEREIN ARE BASED ON SUBSTRATE MATERIALS WITH THE FOLLOWING PROPERTIES:
 - WOOD - MINIMUM SPECIFIC GRAVITY OF 0.55.
 - CONCRETE -MINIMUM COMPRESSIVE STRENGTH OF 3000 PSI.
 - GROUT-FILLED CMU- UNIT STRENGTH CONFORMS TO ASTM C-90 WITH MINIMUM COMPRESSIVE STRENGTH OF 2000 PSI AND GROUT CONFORMS TO ASTM C 476, MINIMUM GROUT COMPRESSIVE STRENGTH OF 2000 PSI.
 - HOLLOW BLOCK CMU - UNIT STRENGTH CONFORMS TO ASTM C-90 WITH MINIMUM COMPRESSIVE STRENGTH OF 2000 PSI.
- SEE SHEETS 7 AND 8 FOR MORE DETAILS OF THE INSTALLATION REQUIREMENTS, INCLUDING ANCHOR LOCATIONS, EDGE DISTANCES, EMBEDMENTS, AND SHIM SPACING.
- OPTIONALLY, ANCHORS CAN BE PLACED IN NARROW SECTION OF HEAD OR JAMB AS LONG AS MINIMUM EMBEDMENT AND EDGE DISTANCE ARE ACHIEVED.



ANCHOR TABLE								
ANCHOR TYPE	ANCHOR SIZE	SUBSTRATE	MIN. EMBEDMENT	MIN. EDGE DISTANCE	6'8" DOORS		8'0" DOORS	
					MAX. O.C. SPACING AT JAMBS	# OF ANCHORS AT HEAD/SILL CLUSTERS	MAX. O.C. SPACING AT JAMBS	# OF ANCHORS AT HEAD/SILL CLUSTERS
WOOD SCREW	#10	2X WOOD BUCK OR FRAMING	1-1/2"	3/4"	17-1/2"	4	17-1/4"	4
ITW TAPCON	3/16"	CONCRETE/CMU	1-1/4"	2-1/2"	17-1/2"	4	17-1/4"	4
ELCO ULTRACON	1/4"	CONCRETE/CMU	1-3/8" - CONC. 1-1/4" - CMU	1"	17-1/2"	4	17-1/4"	4
ITW TAPCON	3/16"	CONCRETE/CMU	1-1/4"	1"	11-5/8"	8	14-3/8"	6



PREPARED BY:



BUILDING DROPS, INC.

398 E. DANIA BEACH BLVD., STE. 338
DANIA BEACH, FL 33004
PH: (954)399-8478
FAX: (954)744.4738
WEB: www.buildingdrops.com

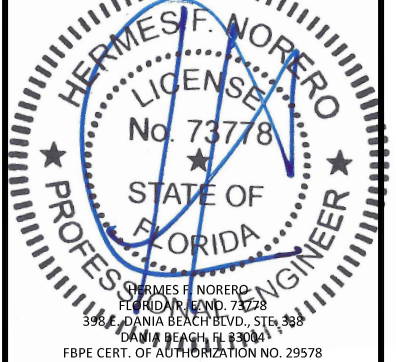
TITLE: DESIGN PRO/SMOOTH PRO FULL LITE
IMPACT APPROVED
TYPICAL ANCHOR LAYOUTS AND NOTES

3737 LAKEPORT BLVD.,
KLAMATH FALLS, OR 97601
PH: (541)882-3451
FAX: (541)850-2609

JELD-WEN
WINDOWS & DOORS

REMARKS	BY	DATE
Add Multi-Point Lock & Radius Lt	GL	06/23/14
Reference DWG. #A010874A	AM	09/10/19

THE INSTALLATION DETAILS DESCRIBED HEREIN ARE GENERIC AND MAY NOT REFLECT ACTUAL CONDITIONS FOR A SPECIFIC SITE. IF SITE CONDITIONS CAUSE INSTALLATION TO DEVIATE FROM THE REQUIREMENTS DETAILED HEREIN, A LICENSED ENGINEER OR ARCHITECT SHALL PREPARE SITE SPECIFIC DOCUMENTS TO USE WITH THIS DOCUMENT.



DATE: 02.05.14
DWG. BY: GL/TJM CHK. BY: SS/MSS
SCALE: NTS
DWG. #: D015705
SHEET: OF 9

PREPARED BY:



BUILDING DROPS, INC.
 398 E. DANIA BEACH BLVD., STE. 338
 DANIA BEACH, FL 33004
 PH: (954)399-8478
 FAX: (954)744.4738
 WEB: www.buildingdrops.com

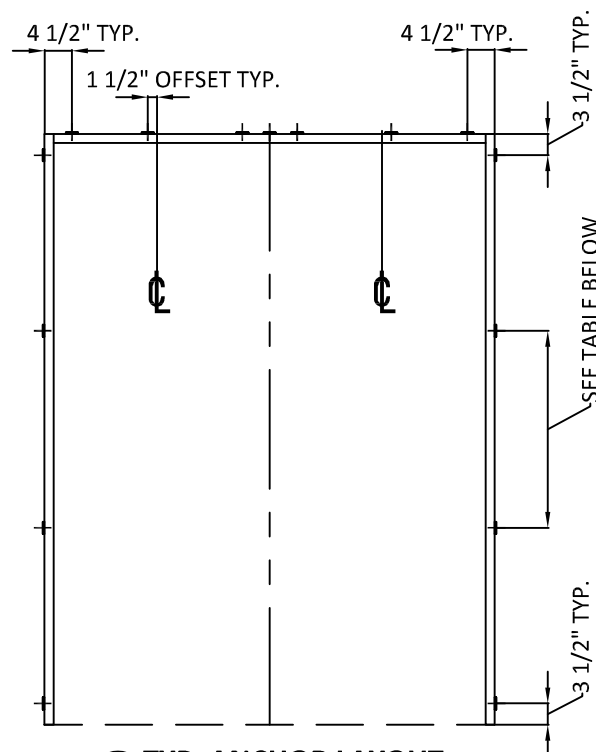
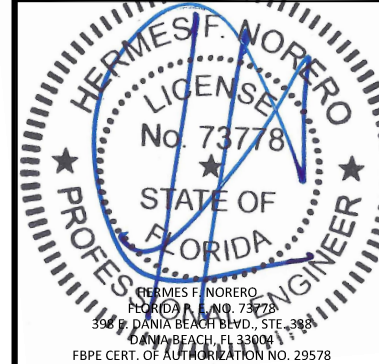
TITLE: DESIGN PRO/SMOOTH PRO FULL LITE
 IMPACT APPROVED
 OPTIONAL 2X BUCK
 ANCHORING DETAILS

3737 LAKEPORT BLVD.,
 KLAMATH FALLS, OR 97601
 PH: (541)882-3451
 FAX: (541)850-2609

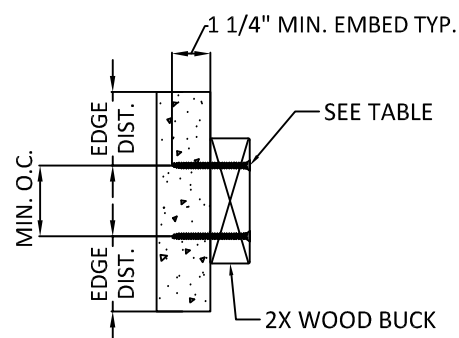


REMARKS	BY	DATE
Add Multi-Point Lock & Radius Lt	GL	06/23/14
Reference DWG. #A010874A	AM	09/10/19

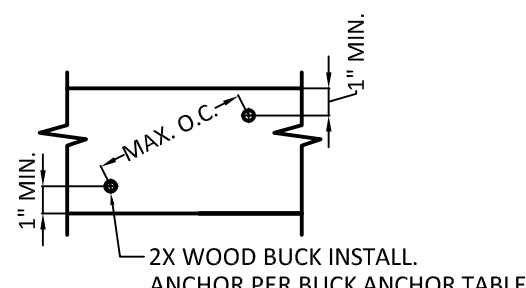
THE INSTALLATION DETAILS DESCRIBED HEREIN ARE GENERIC AND MAY NOT REFLECT ACTUAL CONDITIONS FOR A SPECIFIC SITE. IF SITE CONDITIONS CAUSE INSTALLATION TO DEVIATE FROM THE REQUIREMENTS DETAILED HEREIN, A LICENSED ENGINEER OR ARCHITECT SHALL PREPARE SITE SPECIFIC DOCUMENTS FOR USE WITH THIS DOCUMENT.



1 TYP. ANCHOR LAYOUT
 3 OPTIONAL 2X BUCK IN CONCRETE/MASONRY



3 2X WOOD BUCK INSTALL.
 CROSS SECTION



4 2X WOOD BUCK INSTALL.
 SIDE VIEW

2X BUCK ANCHOR TABLE							
ANCHOR TYPE	ANCHOR SIZE	SUBSTRATE	MIN. EMBEDMENT	MIN. EDGE DIST. TO SUBSTRATE	MIN. CENTER TO CENTER DISTANCE	6'8" DOORS	8'0" DOORS
						MAX. O.C. SPACING AT JAMBS	MAX. O.C. SPACING AT JAMBS
ITW TAPCON	1/4"	CONCRETE/CMU	1-1/4"	2-1/2"	4"	25"	30-1/4"
ELCO ULTRACON	1/4"	CONCRETE/CMU	1-3/8" - CONC. 1-1/4" - CMU	1"	4"	25"	30-1/4"

NOTES:

- 2X BUCK IS NOT FOR INSTALLATION AT SILL. THRESHOLD SHALL BE FASTENED IN ACCORDANCE WITH ANCHOR LOCATIONS SHOWN ON SHEET 2.
- ANCHORS MAY BE STAGGERED AS SHOWN IN DETAIL 4/3.

DATE: 02.05.14

DWG. BY: GL/TJM | CHK. BY: SS/MSS

SCALE: NTS

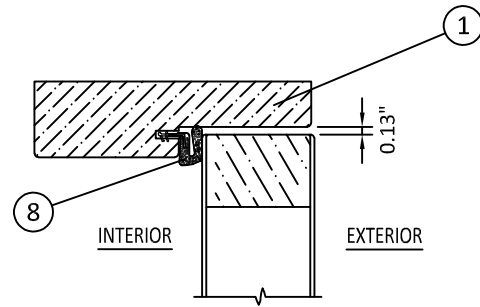
DWG. #: D015705

SHEET: OF 9

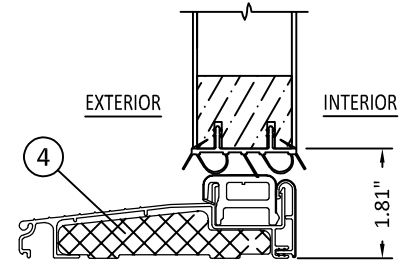
PREPARED BY:



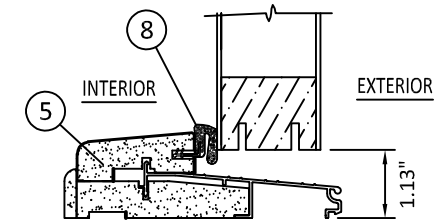
BUILDING DROPS, INC.
398 E. DANIA BEACH BLVD., STE. 338
DANIA BEACH, FL 33004
PH: (954)399-8478
FAX: (954)744.4738
WEB: www.buildingdrops.com



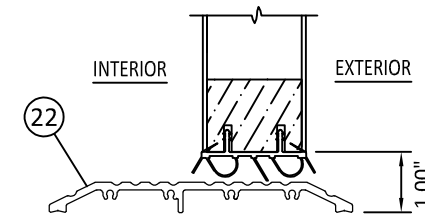
1
4 **OPERABLE HEAD**
OUTSWING SHOWN - INSWING SIMILAR



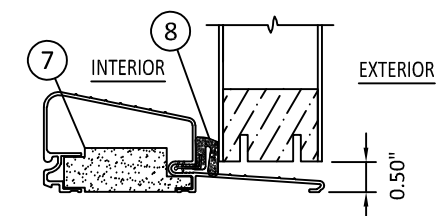
3
4 **OPERABLE SILL**
INSWING
ENDURA ZAIL4565F



4
4 **OPERABLE SILL**
OUTSWING
AFCO J-2297



5
4 **OPERABLE ADA SILL**
INSWING/OUTSWING



7
4 **OPERABLE SILL**
OUTSWING
OPTIONAL AFCO H-497

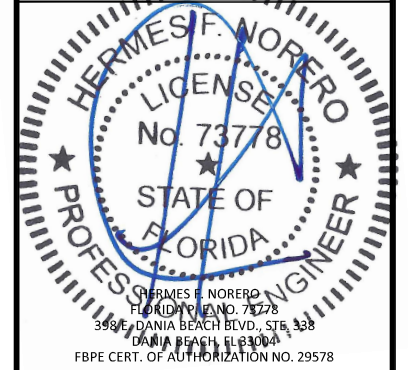
TITLE: DESIGN PRO/SMOOTH PRO FULL LITE
IMPACT APPROVED
VERTICAL ASSEMBLIES

3737 LAKEPORT BLVD.,
KLAMATH FALLS, OR 97601
PH: (541)882-3451
FAX: (541)850-2609



REMARKS	BY	DATE
Add Multi-Point Lock & Radius Lt	GL	06/23/14
Reference DWG. #A010874A	AM	09/10/19

THE INSTALLATION DETAILS DESCRIBED HEREIN ARE GENERIC AND MAY NOT REFLECT ACTUAL CONDITIONS FOR A SPECIFIC SITE. IF SITE CONDITIONS CAUSE INSTALLATION TO DEVIATE FROM THE REQUIREMENTS DETAILED HEREIN, A LICENSED ENGINEER OR ARCHITECT SHALL PREPARE SITE SPECIFIC DOCUMENTS FOR USE WITH THIS DOCUMENT.



DATE: 02.05.14
DWG. BY: GL/TJM CHK. BY: SS/MSS
SCALE: NTS
DWG. #: D015705
SHEET: OF 9

PREPARED BY:



BUILDING DROPS, INC.
 398 E. DANIA BEACH BLVD., STE. 338
 DANIA BEACH, FL 33004
 PH: (954)399-8478
 FAX: (954)744-4738
 WEB: www.buildingdrops.com

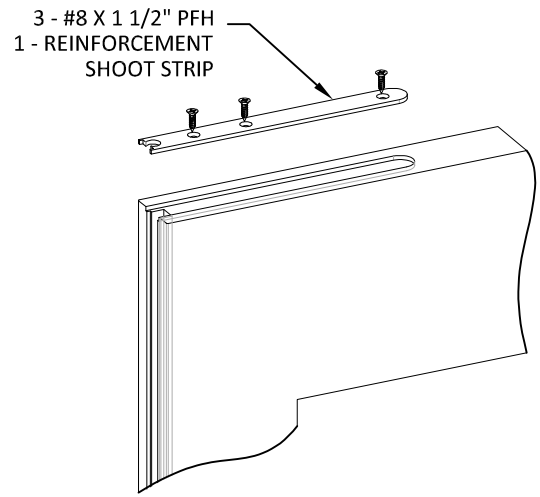
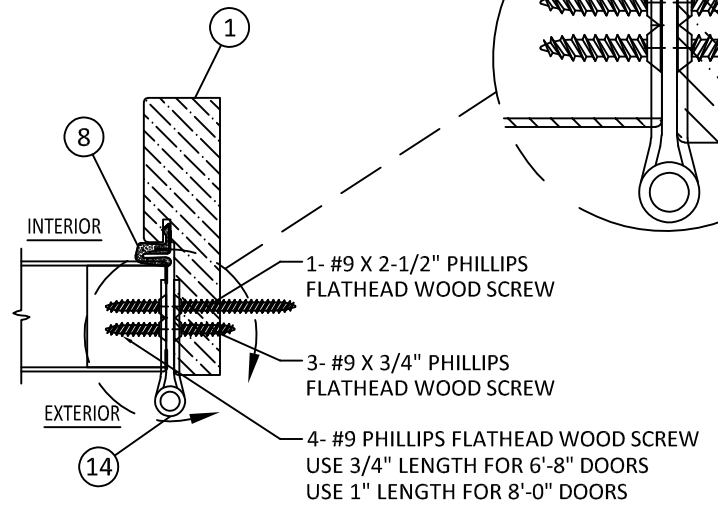
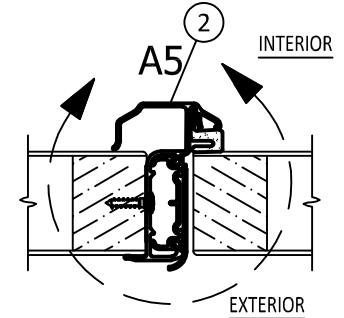
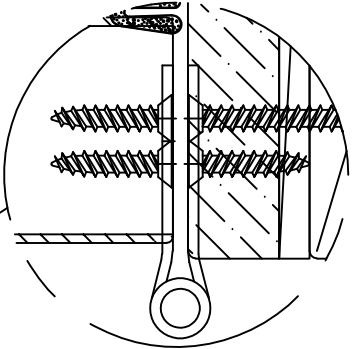
TITLE: DESIGN PRO/SMOOTH PRO FULL LITE
 IMPACT APPROVED
 HORIZONTAL ASSEMBLIES,
 GLAZING DETAIL

3737 LAKEPORT BLVD.,
 KLAMATH FALLS, OR 97601
 PH: (541)882-3451
 FAX: (541)850-2609

JELDOWEN
 WINDOWS & DOORS

HINGE SCHEDULE	
DOOR HEIGHT	QUANTITY
6'-8"	3
8'-0"	4

HINGE DETAIL AT JAMB:
 PLACE #9 X 2-1/2" PFH SCREW NEXT TO WEATHERSTRIP



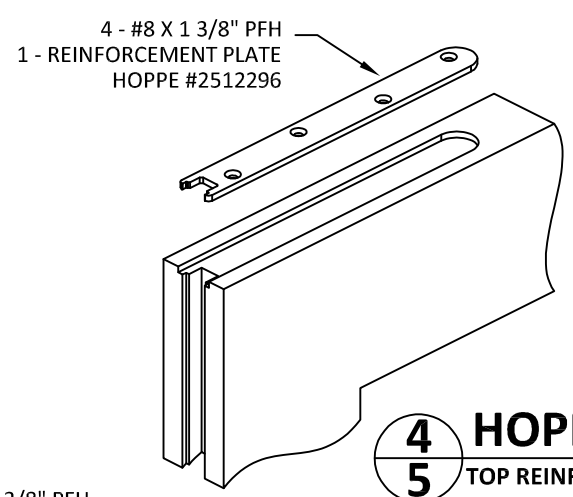
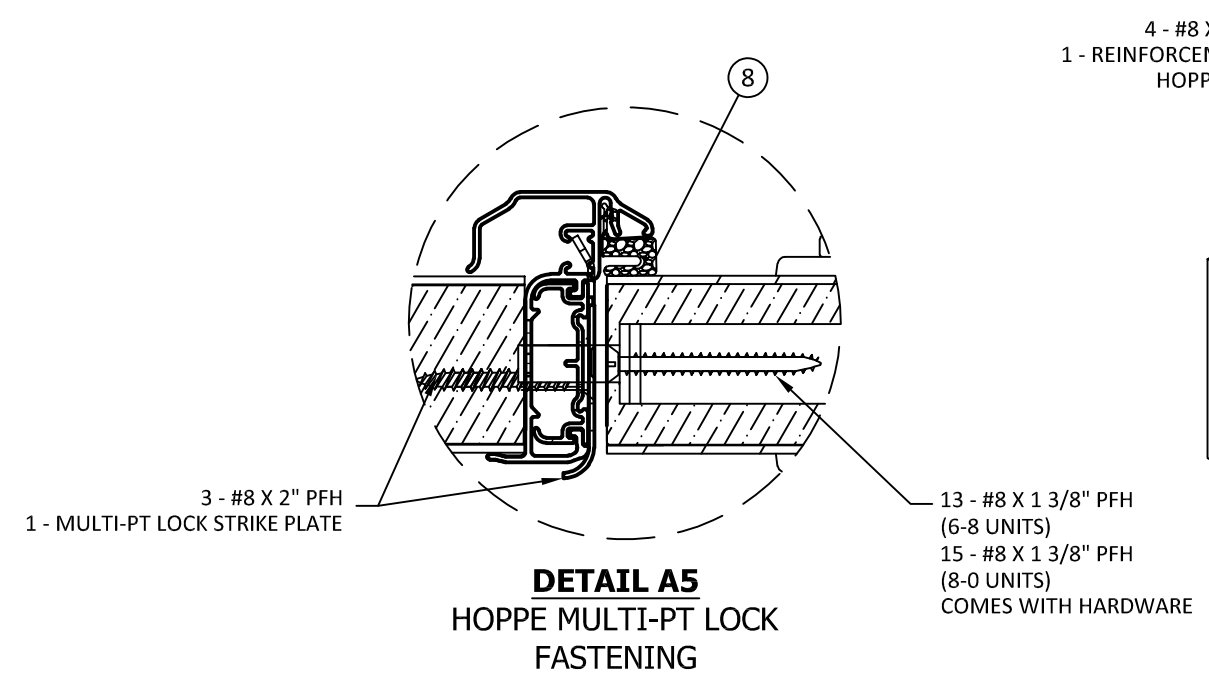
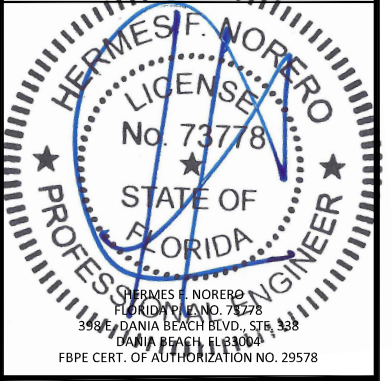
1
5 MEETING STILE
 OUTSWING SHOWN - INSWING SIMILAR

3
5 HINGE JAMB
 OUTSWING SHOWN - INSWING SIMILAR

7
5 GU MULTI-POINT LOCK
 TOP/BOTTOM REINF. PLATE - ACTIVE PANEL ONLY

REMARKS	BY	DATE
Add Multi-Point Lock & Radius Lt.	GL	06/23/14
Reference DWG. #A010874A	AM	09/10/19

THE INSTALLATION DETAILS DESCRIBED HEREIN ARE GENERIC AND MAY NOT REFLECT ACTUAL CONDITIONS FOR A SPECIFIC SITE. IF SITE CONDITIONS CAUSE INSTALLATION TO DEVIATE FROM THE REQUIREMENTS DETAILED HEREIN, A LICENSED ENGINEER OR ARCHITECT SHALL PREPARE SITE SPECIFIC DOCUMENTS FOR USE WITH THIS DOCUMENT.



3 - #8 X 2" PFH
 1 - MULTI-PT LOCK STRIKE PLATE

13 - #8 X 1 3/8" PFH (6-8 UNITS)
 15 - #8 X 1 3/8" PFH (8-0 UNITS)
 COMES WITH HARDWARE

DETAIL A5
 HOPPE MULTI-PT LOCK FASTENING

4
5 HOPPE MULTI-POINT LOCK
 TOP REINFORCEMENT PLATE - ACTIVE PANEL ONLY

DATE: 02.05.14	
DWG. BY: GL/TJM	CHK. BY: SS/MSS
SCALE: NTS	
DWG. #: D015705	
SHEET: 5 OF 9	

PREPARED BY:



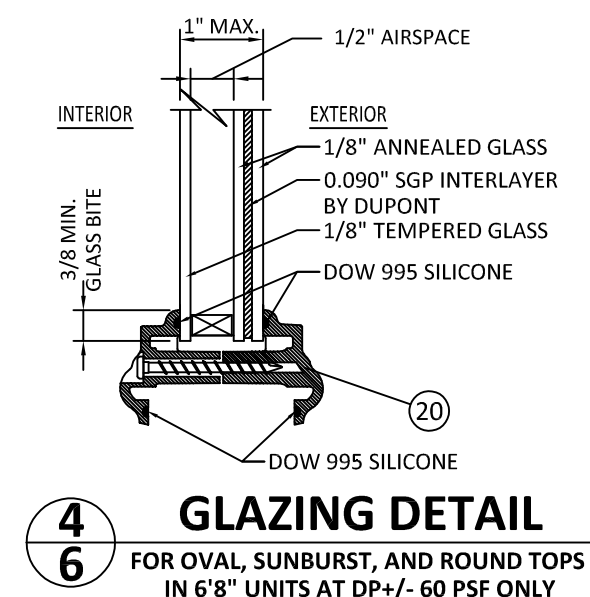
BUILDING DROPS, INC.
 398 E. DANIA BEACH BLVD., STE. 338
 DANIA BEACH, FL 33004
 PH: (954)399-8478
 FAX: (954)744.4738
 WEB: www.buildingdrops.com

DESIGN PRO/SMOOTH PRO FULL LITE
 IMPACT APPROVED
 WOOD SUBSTRATES

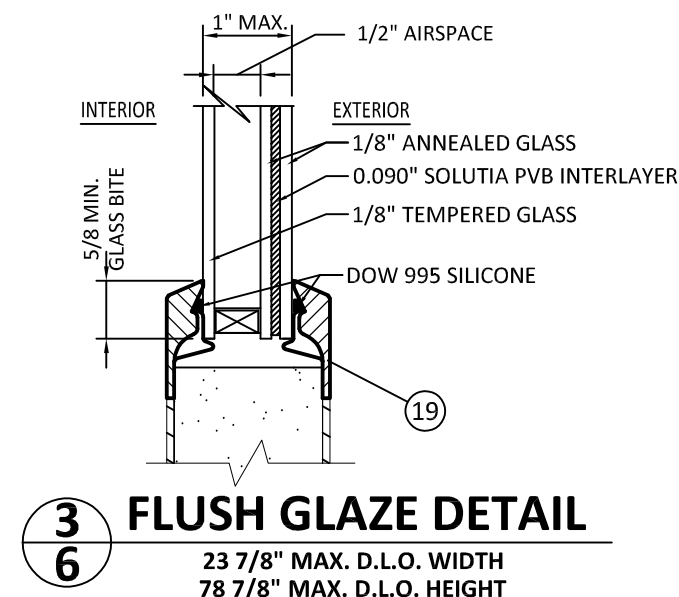
3737 LAKEPORT BLVD.,
 KLAMATH FALLS, OR 97601
 PH: (541)882-3451
 FAX: (541)850-2609

JELDOWEN
 WINDOWS & DOORS

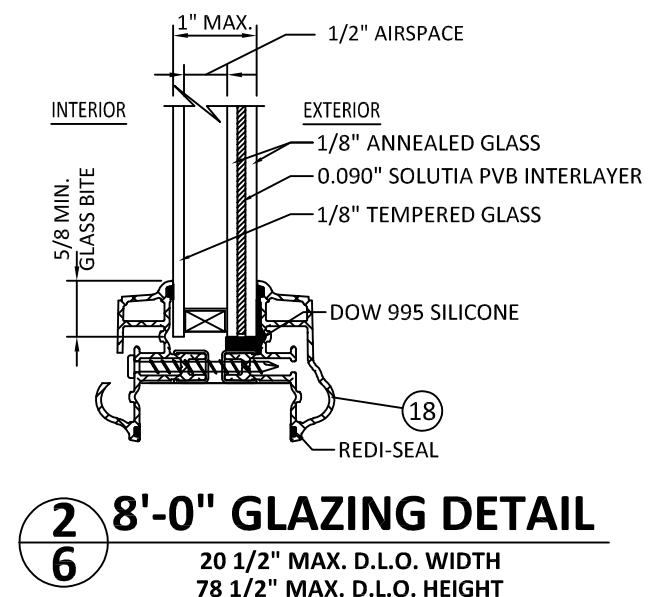
TITLE:



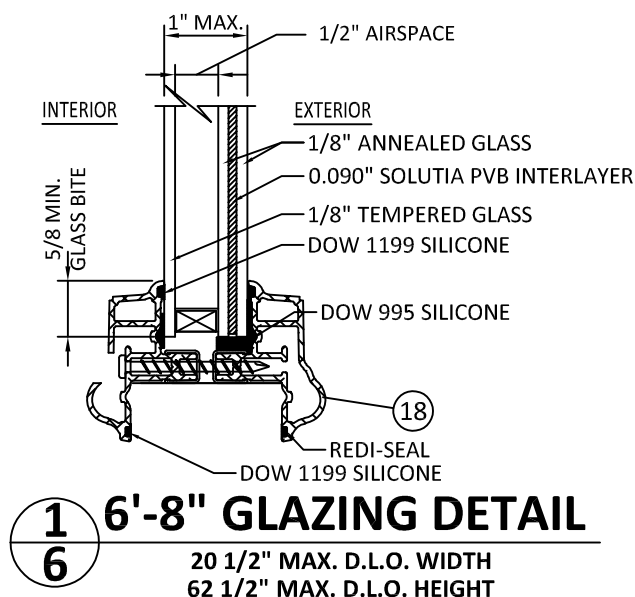
4 **6** **GLAZING DETAIL**
 FOR OVAL, SUNBURST, AND ROUND TOPS
 IN 6'8" UNITS AT DP +/- 60 PSF ONLY



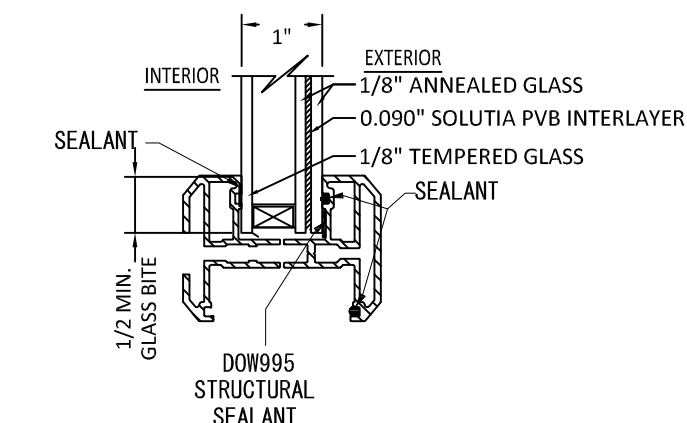
3 **6** **FLUSH GLAZE DETAIL**
 23 7/8" MAX. D.L.O. WIDTH
 78 7/8" MAX. D.L.O. HEIGHT



2 **6** **8'-0" GLAZING DETAIL**
 20 1/2" MAX. D.L.O. WIDTH
 78 1/2" MAX. D.L.O. HEIGHT



1 **6** **6'-8" GLAZING DETAIL**
 20 1/2" MAX. D.L.O. WIDTH
 62 1/2" MAX. D.L.O. HEIGHT

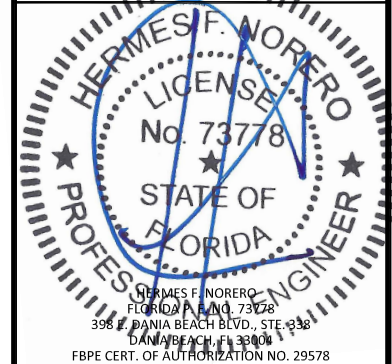


5 **6** **GLAZING DETAIL OPTION**
 20 1/2" MAX D.L.O. WIDTH
 78 1/2" MAX D.L.O. HEIGHT
 3-0 X 6-8 - DP 60
 6-0 X 6-8 - DP 60
 3-0 X 8-0 - DP 50
 6-0 X 8-0 - DP 45

NOTE:
 FRACTIONAL GLAZING, INCLUDING INTERNAL GRID, BLINDS
 BETWEEN GLASS, DECORATIVE, AND EXTERNAL WROUGHT
 IRON ARE APPROVED ON ALL GLAZING DETAILS SHOWN
 ABOVE.

REMARKS	BY	DATE
Add Multi-Point Lock & Radius Lt	GL	06/23/14
Reference DWG. #A010874A	AM	09/10/19

THE INSTALLATION DETAILS DESCRIBED HEREIN ARE GENERIC
 AND MAY NOT REFLECT ACTUAL CONDITIONS FOR A SPECIFIC
 SITE. IF SITE CONDITIONS CAUSE INSTALLATION TO DEVIATE
 FROM THE REQUIREMENTS DETAILED HEREIN, A LICENSED
 ENGINEER OR ARCHITECT SHALL PREPARE SITE SPECIFIC
 DOCUMENTS FOR USE WITH THIS DOCUMENT.



DATE:	02.05.14
DWG. BY:	GL/TJM
CHK. BY:	SS/MSS
SCALE:	NTS
DWG. #:	D015705
SHEET:	OF 9

PREPARED BY:

BUILDING DROPS, INC.

398 E. DANIA BEACH BLVD., STE. 338
 DANIA BEACH, FL 33004
 PH: (954)399-8478
 FAX: (954)744.4738
 WEB: www.buildingdrops.com

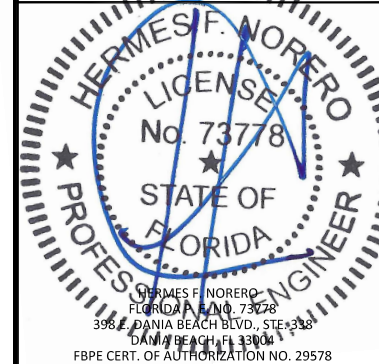
DESIGN PRO/SMOOTH PRO FULL LITE
 IMPACT APPROVED
 WOOD SUBSTRATES

3737 LAKEPORT BLVD.,
 KLAMATH FALLS, OR 97601
 PH: (541)882-3451
 FAX: (541)850-2609

TITLE:

REMARKS	BY	DATE
Add Multi-Point Lock & Radius Lt	GL	06/23/14
Reference DWG. #A010874A	AM	09/10/19

THE INSTALLATION DETAILS DESCRIBED HEREIN ARE GENERIC AND MAY NOT REFLECT ACTUAL CONDITIONS FOR A SPECIFIC SITE. IF SITE CONDITIONS CAUSE INSTALLATION TO DEVIATE FROM THE REQUIREMENTS DETAILED HEREIN, A LICENSED ENGINEER OR ARCHITECT SHALL PREPARE SITE SPECIFIC DOCUMENTS FOR USE WITH THIS DOCUMENT.



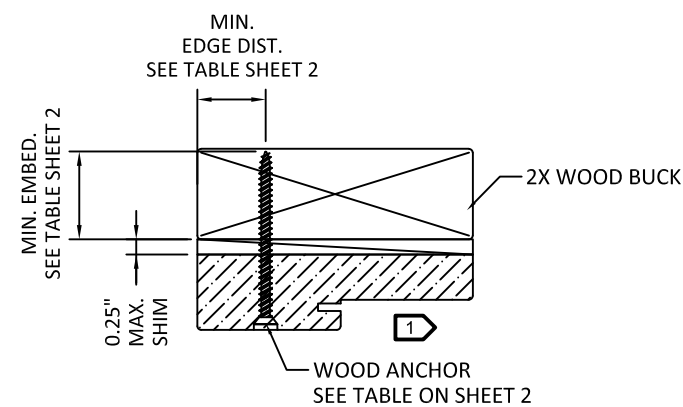
DATE: 02.05.14

DWG. BY: GL/TJM | CHK. BY: SS/MSS

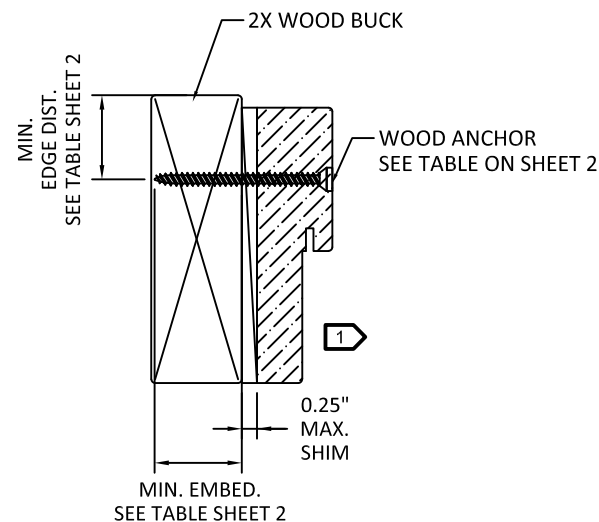
SCALE: NTS

DWG. #: D015705

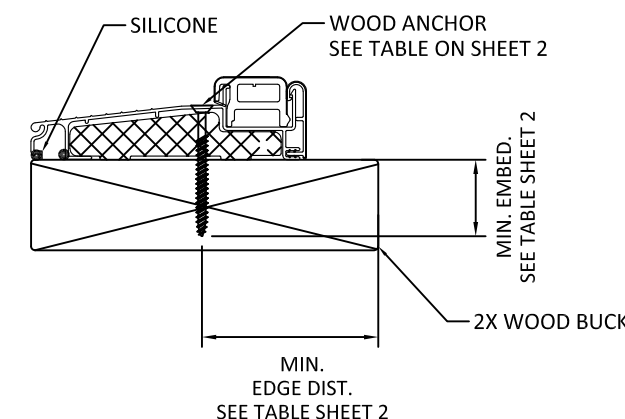
SHEET: OF 9



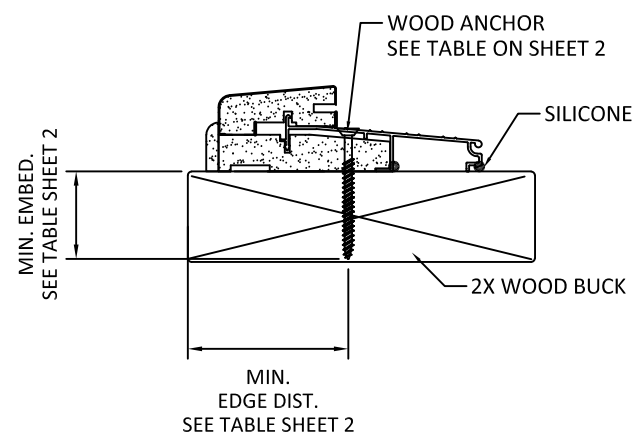
1
7 HEAD (TYPICAL)
OUTSWING SHOWN - INSWING SIMILAR



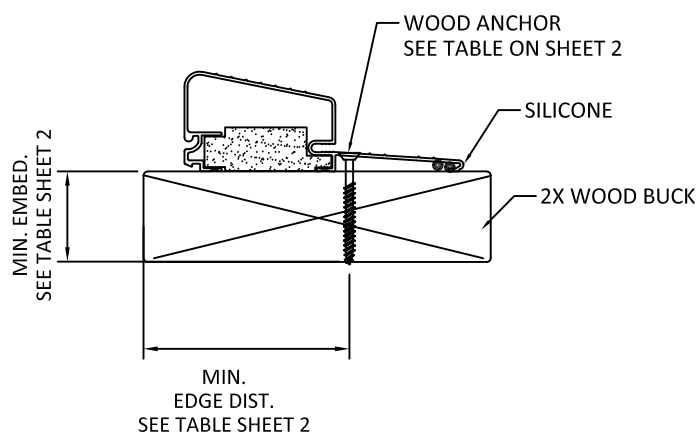
2
7 JAMB (TYPICAL)
OUTSWING SHOWN - INSWING SIMILAR



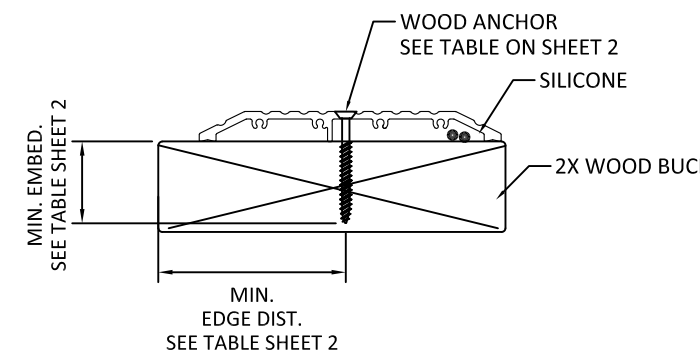
3
7 OPERABLE SILL
INSWING
ENDURA ZAIL4565F



4
7 OPERABLE SILL
OUTSWING
AFCO J-2297



5
7 OPERABLE SILL
HIGH BUMP OUTSWING
AFCO H-497



6
7 ADA THRESHOLD

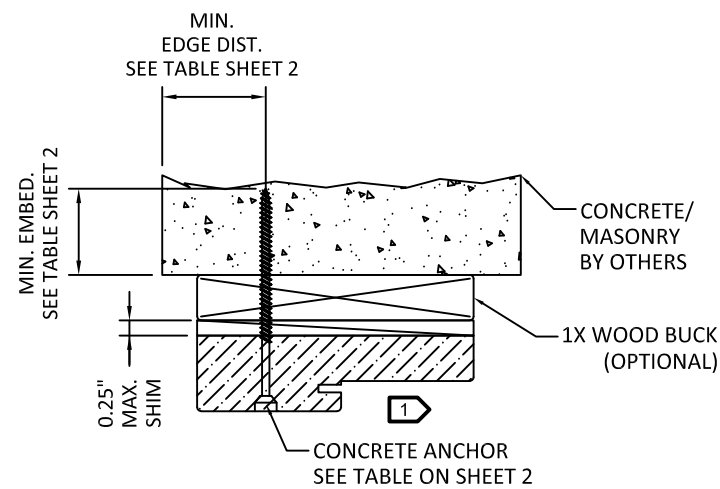
1 OPTIONALLY, ANCHOR CAN BE PLACED IN NARROW SECTION OF HEAD OR JAMB AS LONG AS MINIMUM EMBEDMENT AND EDGE DISTANCE ARE ACHIEVED.

PREPARED BY:

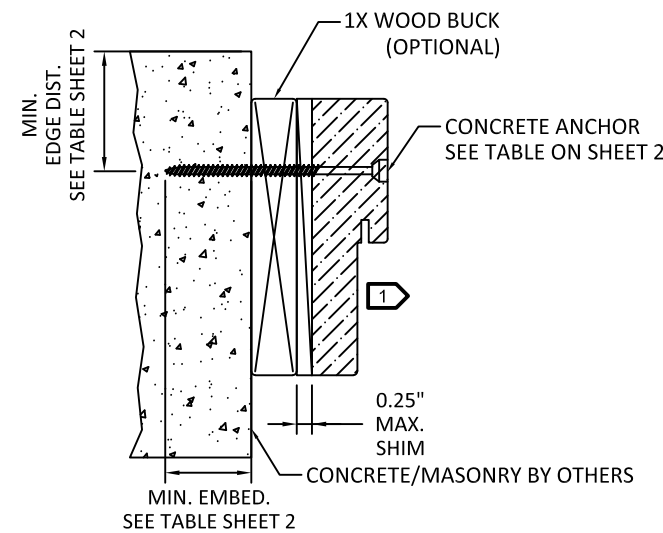
BUILDING DROPS, INC.
 398 E. DANIA BEACH BLVD., STE. 338
 DANIA BEACH, FL 33004
 PH: (954)399-8478
 FAX: (954)744.4738
 WEB: www.buildingdrops.com

TITLE: **DESIGN PRO/SMOOTH PRO FULL LITE IMPACT APPROVED CONCRETE SUBSTRATES**

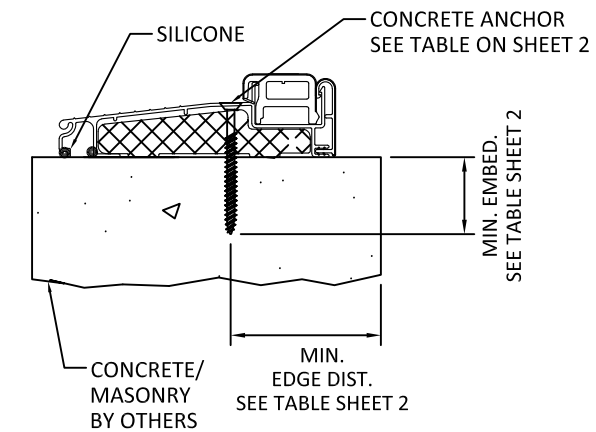
3737 LAKEPORT BLVD.,
 KLAMATH FALLS, OR 97601
 PH: (541)882-3451
 FAX: (541)850-2609



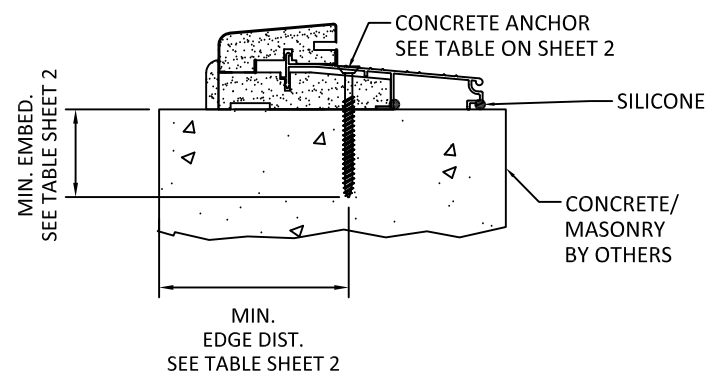
1
8 HEAD (TYPICAL)
 OUTSWING SHOWN - INSWING SIMILAR



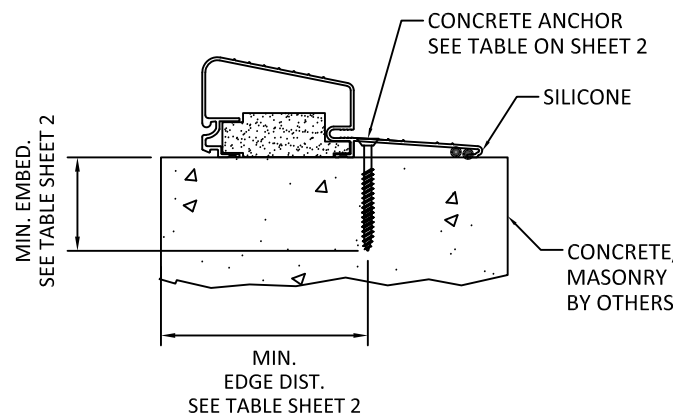
2
8 JAMB (TYPICAL)
 OUTSWING SHOWN - INSWING SIMILAR



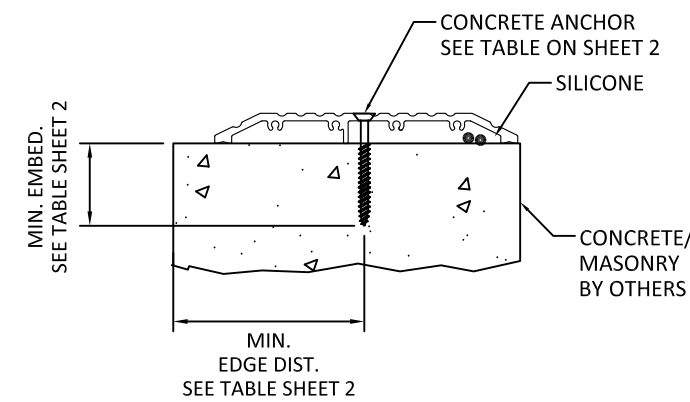
3
8 OPERABLE SILL
 INSWING
 ENDURA ZAIL4565F



4
8 OPERABLE SILL
 OUTSWING
 AFCO J-2297



5
8 OPERABLE SILL
 HIGH BUMP OUTSWING
 AFCO H-497

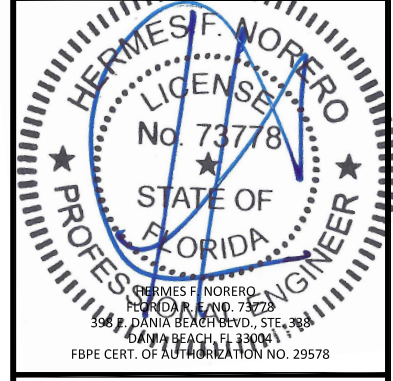


6
8 ADA THRESHOLD

1 OPTIONALLY, ANCHOR CAN BE PLACED IN NARROW SECTION OF HEAD OR JAMB AS LONG AS MINIMUM EMBEDMENT AND EDGE DISTANCE ARE ACHIEVED.

REMARKS	BY	DATE
Add Multi-Point Lock & Radius Lt	GL	06/23/14
Reference DWG. #A010874A	AM	09/10/19

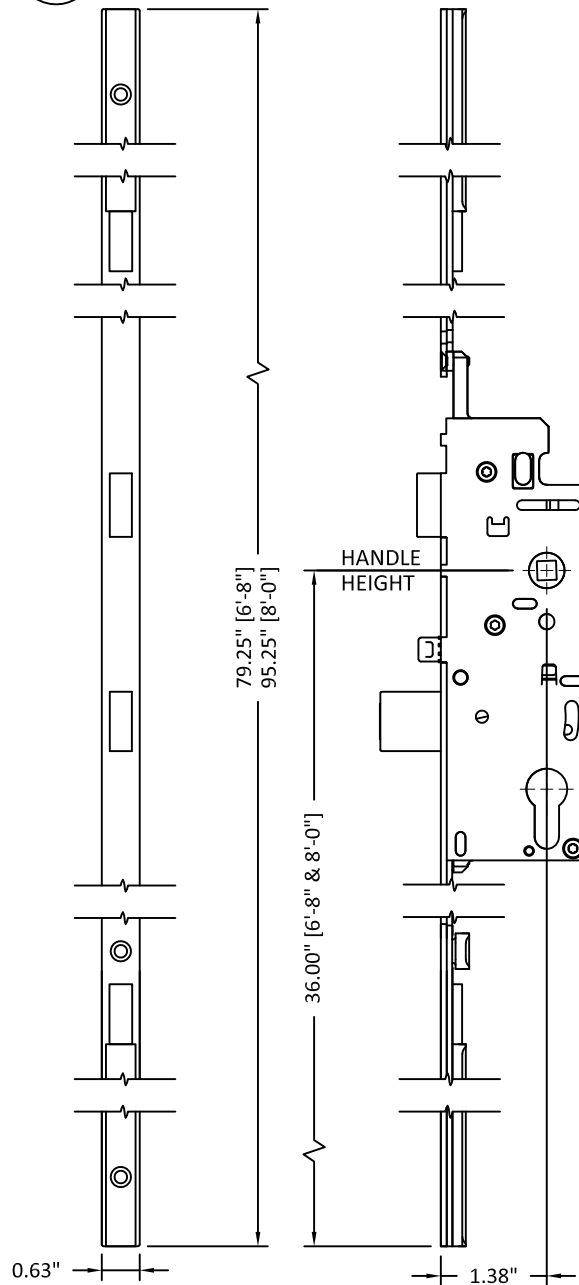
THE INSTALLATION DETAILS DESCRIBED HEREIN ARE GENERIC AND MAY NOT REFLECT ACTUAL CONDITIONS FOR A SPECIFIC SITE. IF SITE CONDITIONS CAUSE INSTALLATION TO DEVIATE FROM THE REQUIREMENTS DETAILED HEREIN, A LICENSED ENGINEER OR ARCHITECT SHALL PREPARE SITE SPECIFIC DOCUMENTS FOR USE WITH THIS DOCUMENT.



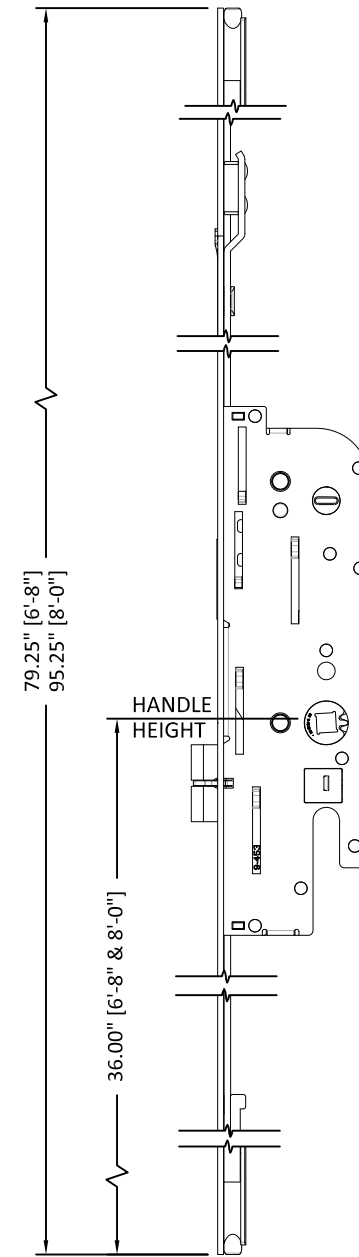
DATE: 02.05.14	
DWG. BY: GL/TJM	CHK. BY: SS/MSS
SCALE: NTS	
DWG. #: D015705	
SHEET: OF 9	

BILL OF MATERIALS		
ITEM#	DESCRIPTION	MATERIAL
1	FRAME HEAD/JAMBS	FINGER-JOINTED PINE
		SOLID PINE
		LAMINATED VENEER LUMBER
		COMPOSITE
2	ASTRAGAL, ENDURA ULTIMATE HURRICANE	6063-T6 ALUMINUM
3	(NOT USED)	-
4	ENDURA ZAIL4565F THRESHOLD	-
5	AFCO J-2297 THRESHOLD	-
6	(NOT USED)	-
7	AFCO H-497 THRESHOLD	-
8	WEATHERSTRIP	URETHANE FOAM & POLYETHYLENE
9	NON-COMPRESSION SHIM (0.25" MAX. THK.)	COMPOSITE
10	(NOT USED)	WOOD
11	(NOT USED)	WOOD
12	#10 WOOD INSTALLATION SCREW W/ 1 1/2" MIN. EMBEDMENT	STEEL
13	CONC./CMU ANCHOR (SEE ANCHOR TABLE SHEETS 2 & 3)	STEEL
14	BUTT HINGE (SEE SCHEDULE SHEET 5)	-
15	LOCK SERIES 400	STEEL
16	DEADBOLT SERIES 780	STEEL
17	HOPPE MULI-POINT HARDWARE HLS9000	STEEL
18	ODL LITE KIT (LMI)	6063-T6 ALUMINUM
19	FLUSH GLAZING LEG	FIBERGLASS
20	ODL LIPLITE KIT (RADIUS LITES)	PC ABS
21	GU SECURY S-BOLT MULTI POINT	STEEL
22	ADA THRESHOLD	-

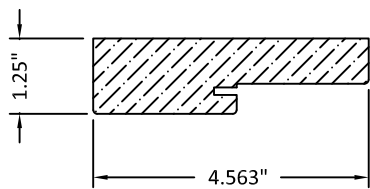
17 HOPPE MULTI-POINT LOCK



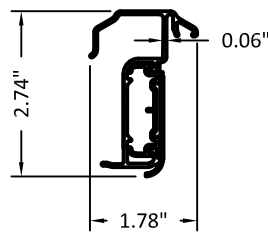
21 GU SECURY S-BOLT MULTI POINT



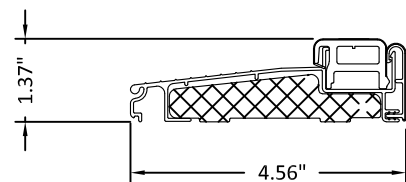
1 FRAME HEAD/JAMBS VARIES, SEE BOM AT LEFT



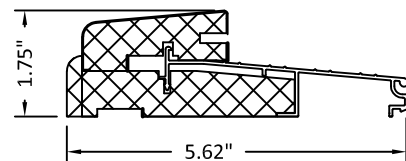
2 ENDURA ASTRAGAL ALUMINUM



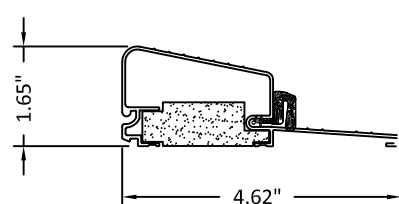
4 ENDURA ZAIL4565F THRESHOLD



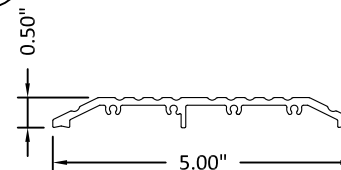
5 AFCO J-2297 THRESHOLD



7 AFCO H-497 THRESHOLD



22 ADA THRESHOLD



PREPARED BY:

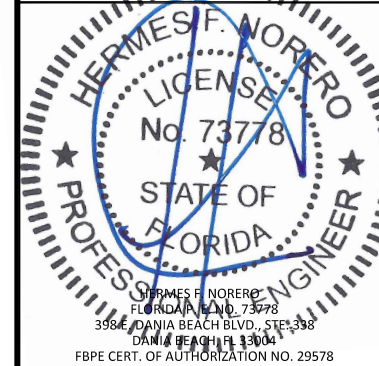
BUILDING DROPS, INC.
 398 E. DANIA BEACH BLVD., STE. 338
 DANIA BEACH, FL 33004
 PH: (954)399-8478
 FAX: (954)744.4738
 WEB: www.buildingdrops.com

TITLE: DESIGN PRO/SMOOTH PRO FULL LITE
 IMPACT APPROVED
 COMPONENTS AND BILL OF MATERIALS

3737 LAKEPORT BLVD.,
 KLAMATH FALLS, OR 97601
 PH: (541)882-3451
 FAX: (541)850-2609

REMARKS	BY	DATE
Add Multi-Point Lock & Radius Lt	GL	06/23/14
Reference DWG. #A010874A	AM	09/10/19

THE INSTALLATION DETAILS DESCRIBED HEREIN ARE GENERIC AND MAY NOT REFLECT ACTUAL CONDITIONS FOR A SPECIFIC SITE. IF SITE CONDITIONS CAUSE INSTALLATION TO DEVIATE FROM THE REQUIREMENTS DETAILED HEREIN, A LICENSED ENGINEER OR ARCHITECT SHALL PREPARE SITE SPECIFIC DOCUMENTS FOR USE WITH THIS DOCUMENT.



DATE:	02.05.14
DWG. BY:	GL/TJM
CHK. BY:	SS/MSS
SCALE:	NTS
DWG. #:	D015705
SHEET:	OF 9